

R454b Refrigerant

SUBMITTAL DATA SHEET



Series Name: Extreme Heat AHU Series
Model Number: MAUHE-H48B-2A/MO1HE-H48B-2A

Air Handler Heat Pump System

Location:	Approval:
Engineer:	Date:
Submitted to:	Construction:
Submitted by:	Unit #:
Reference:	Drawing #:



INDOOR SPECIFICATION

ESP(in.W.G)	0-0.8	
Indoor Air Flow (Turbo/H/ML/SI) (CFM)	1601 / 1471 / 1283 / 1095 / 1095	
Indoor Noise Level (Turbo/H/ML/SI) (dBA)	52 / 52 / 50 / 34 / 34	
Dimension (WxDxH)	inch	24-1/2 x 21 x 53
	mm	622 x 534 x 1346
Package (WxDxH)	inch	26-3/4 x 27-15/16 x 56-1/2
	mm	680 x 710 x 1435
Net/Gross Weight	lbs	163 / 191
	kg	73.9 / 86.6

OUTDOOR SPECIFICATION

Compressor Type	ROTARY	
Compressor Model	MTH550UKPC8FU	
Refrigerant	R454B	
Refrigerant Oil Charge(mL)	1,800	
Refrigerant Oil	HAF68D1C	
Outdoor Air Flow (Max) (CFM)	3,037	
Outdoor Noise Level (dBA)	65	
Dimension (WxDxH)	inch	38-9/16 x 16-3/8 x 38-3/8
	mm	980 x 415 x 975
Package (WxDxH)	inch	45-1/16 x 19-11/16 x 42-1/2
	mm	1145 x 500 x 1080
Net/Gross Weight	lbs	201 / 232
	kg	91.2 / 105.4

EFFICIENCY

Cooling		Heating	
SEER2	16.5	HSPF2-4	9.5
EER2	10.5	COP	3.40

PERFORMANCE of Cooling

Cooling (Btu/hr)	
Rated Capacity	48,000
Min/Max Capacity	15,600 ~ 51,000
Moisture Removal(L/h)	3.85
Standard Operating Range(*F/*C)	-22~122(-30 ~ 50)
Rated Cooling Conditions:	Indoor: 80°F DB/67°F WB Outdoor: 95°F DB/75°F WB

PERFORMANCE of Heating

Heating (Btu/hr)	
1. @ 47°F Rated	50,000
2. @ 47°F Min/Max Capacity	15,500~57,300
3. @ 17°F Rated	37,000
4. @ 5°F Rated: Capacity / COP	46,000/1.9
5. @ 5°F Max: Capacity	46,000
Standard Operating Range(*F/*C)	-22~75 (-30 ~ 24)
1. Rated Heating Conditions:	Indoor: 70°F DB/60°F WB Outdoor: 47°F DB/43°F WB
2. Rated Heating Conditions:	Indoor: 70°F DB/60°F WB Outdoor: 17°F DB/15°F WB
3. Heating Conditions, Compressor Operating at Max. Frequency	Indoor: 70°F DB/60°F WB Outdoor: 5°F DB/5°F WB

ELECTRICAL

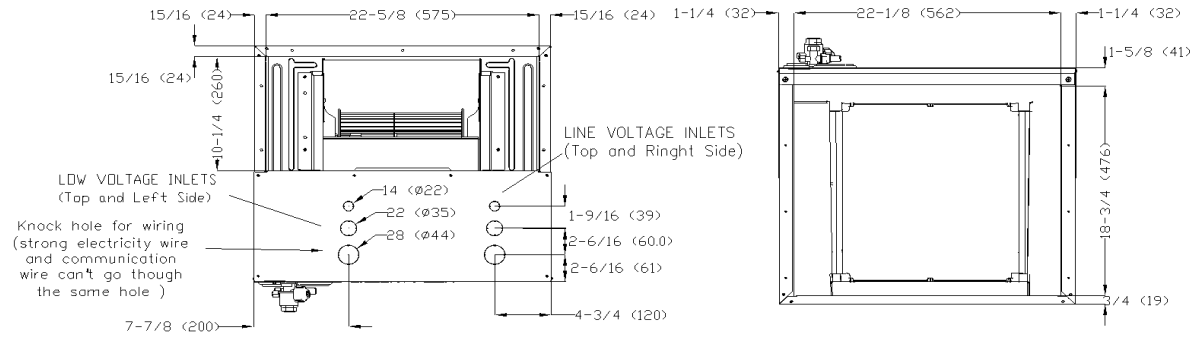
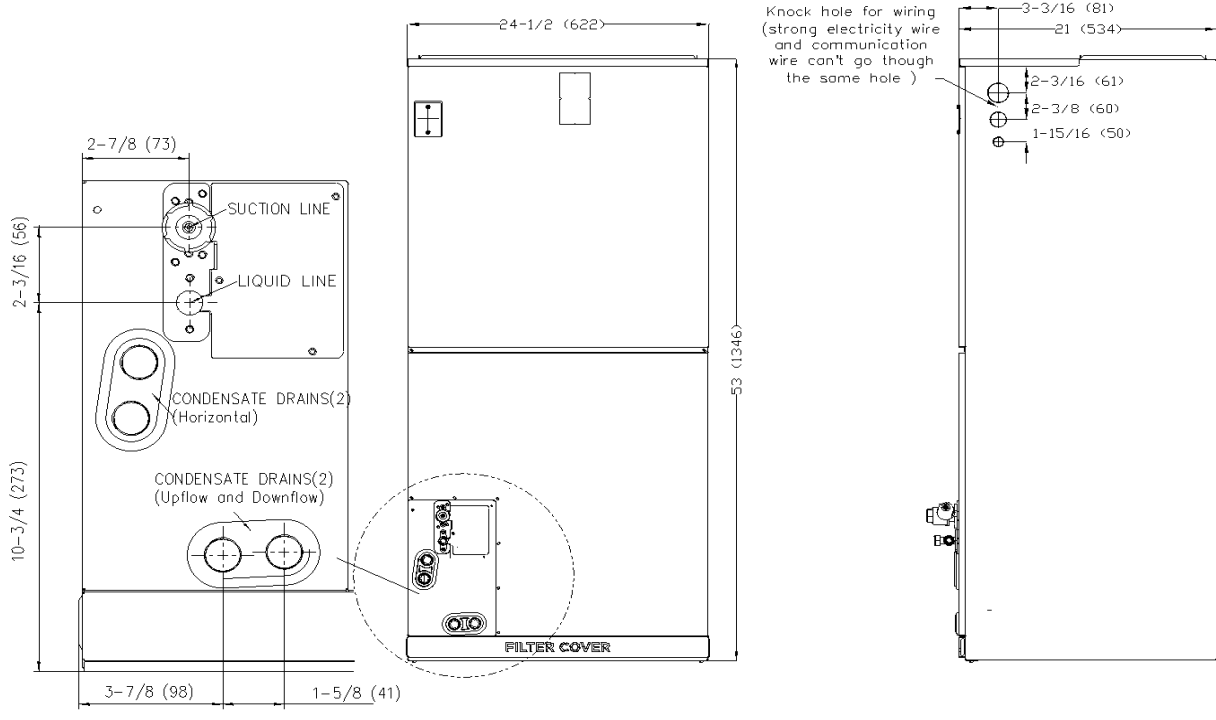
Indoor Power Supply	115/208/230V,60Hz,1Ph
Indoor MCA 115V/(208/230V)	14.5/11.0
Indoor MOP	15.0
Outdoor Power Supply	208/230V,60Hz,1Ph
Outdoor MCA	38.0
Outdoor MOP	40.0
Communication Wiring	AWG 20/2
Compressor RLA	28.0
Outdoor Fan Motor RLA	2.0
Outdoor Fan Motor W	250
Indoor Fan Motor RLA	7.8
Indoor Fan Motor W	750
System Power Input @ Cooling (W)	4,690 (1,345 ~ 5,180)
System Power Input @ Heating (W)	4,750 (1,045 ~ 5,200)
MCA: Min. circuit amps (A)	MOCP: Max. over current protection (A)
RLA: Rated load amps (A)	W: Fan motor rated output (W)

PIPING

Throttle type(Indoor)	EXV
Throttle type(Outdoor)	EXV
Liquid Size	3/8" (9.52mm)
Gas Size	3/4" (19mm)
Max. Piping Length(ft/m)	246 (75)
Max. Height Difference(ft/m)	98 (30)
Max. Pre-charged Length(ft/m)	25 (7.5)
Refrigerant Pre-charged Amount(oz/kg)	134 (3.8)
Additional Charge of Refrigerant(oz/ft)/(g/m)	0.7 (65)
Connection Method	Flared

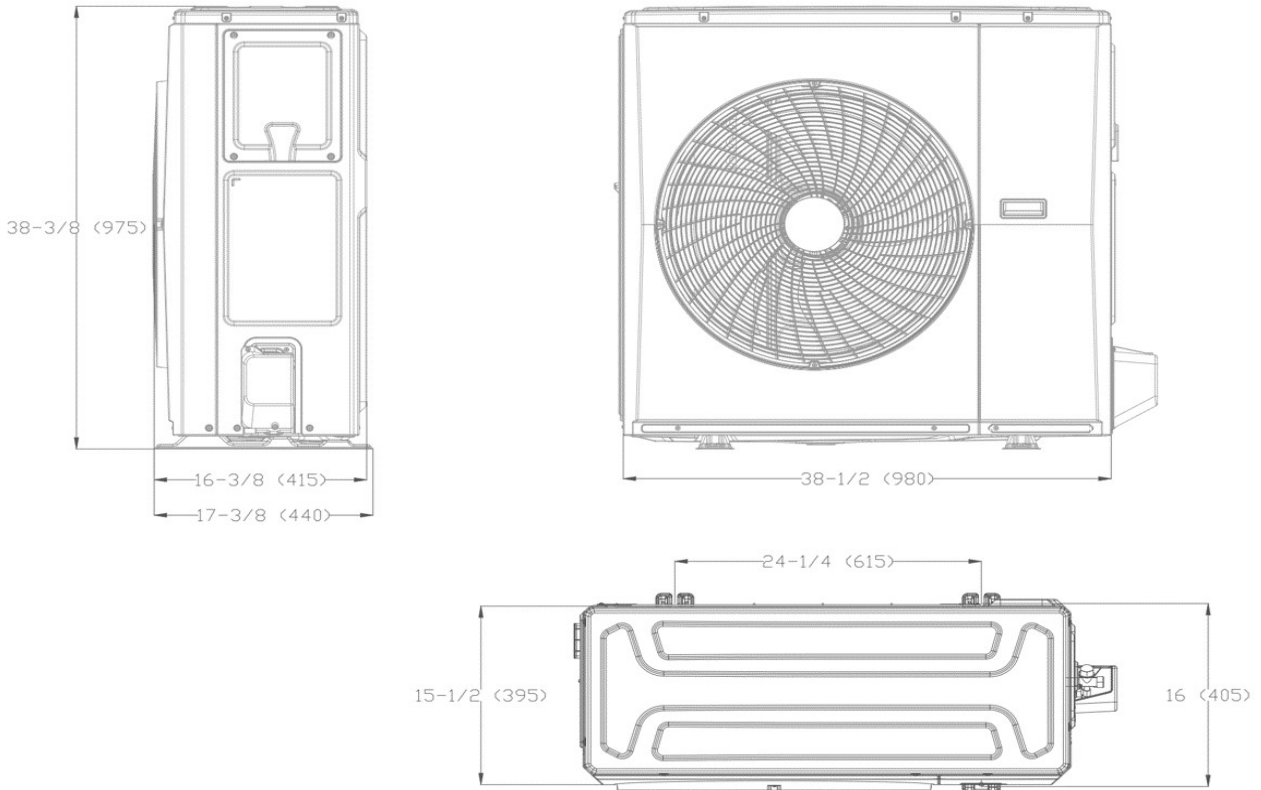
Indoor Unit Dimension

Unit:inch(mm)

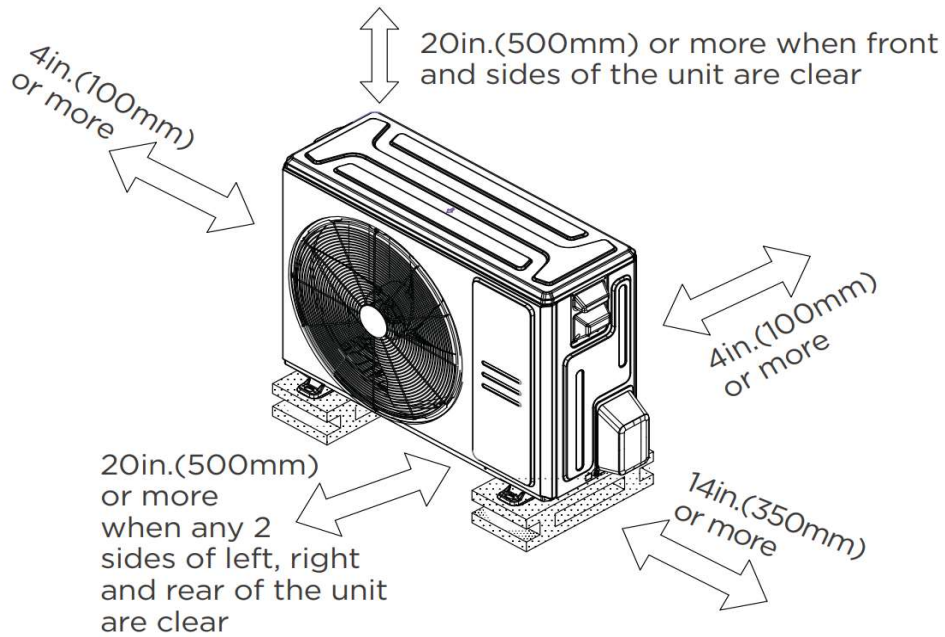


Outdoor Unit Dimension

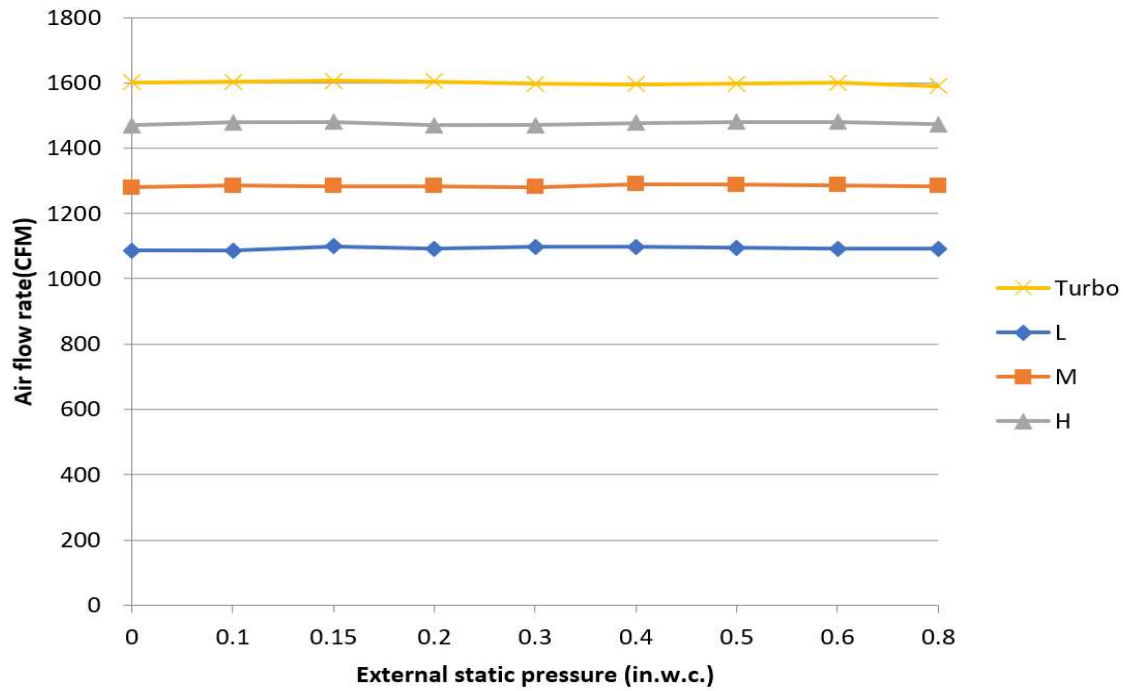
Unit:inch(mm)



Installation Instruction For Outdoor Unit



Fan Performance For Indoor Unit



Features

- Multi-position installation: horizontal(left or right), vertical(up or down)
- Aluminum Coil
- Constant Air Flow system: Up to 0.80 In.W.G
- 1 inch R-4.2 fiberglass insulation reduces condensation and boosts efficiency(optional)
- Optional Auxiliary heat kit up to 25kW
- Easy Maintenance
- Multiple control options available:
 - Two-way communication wired controller:120N(X6)
 - Two-way communication wired controller with built-in Wi-Fi: 120N (X6W)
 - Wireless remote controller
 - Third-Party 24V Thermostat
- Adaptive Control System
- High efficiency up to 19 SEER2, 12.5 EER2, 10.3 HSPF2
- 100% heating output at -4°F*
- Base pan heater and crankcase heater are equipped as standard

* When MAUHE-H36B-2A is paired with MO1SE-H36B-2A, its rated heating capacity at -4°F is 100%