




SUBMITTAL DATA SHEET

A-Coil Heat Pump System	
Location: _____ Engineer: _____ Submitted to: _____ Submitted by: _____ Reference: _____	Approval: _____ Date: _____ Construction: _____ Unit #: _____ Drawing #: _____

Set Code	None
Indoor unit code	22023111000690
Outdoor unit code	22023116000163
Set Model	
Indoor unit model	PAC-36B-HWND1
Outdoor unit model	P30-30HFN1
Certified	
AHRI	
UL	
	



SYSTEM PERFORMANCE DATA			
Power supply			
Normal Operational Voltage	(V, Ph, Hz)	208/230V, 1Ph,	60Hz
Voltage Range	(V)		187-253
Electrical			
Minimum circuit ampacity(Outdoor)	(A)		23.0
Max.fuse(Outdoor)	(A)		35.0
Connection wiring			N/A
Cooling			
Capacity	(Btu/h)	29,000(13,000-33,000)	
Power Input	(W)	2900(1760-3780)	
Current	(A)	12.6(7.65-16.43)	
SEER2	(Btu/W)		15.2
EER2	(Btu/W)		10.0
Heating			
Capacity	(Btu/h)	31000(8,000-34,000)	
Power Input	(W)	2860(680-4200)	
Current	(A)	14.43(2.96-18.26)	
HSPF2-4	(Btu/W)		8.5
HSPF2-5	(Btu/W)		6.6
COP	W/W		3.18
Heat at 17F(H32)	(Btu/h)		19600
Heat at 5F(H42)	(Btu/h)		25000
COP at 5F(H42)	W/W		1.80

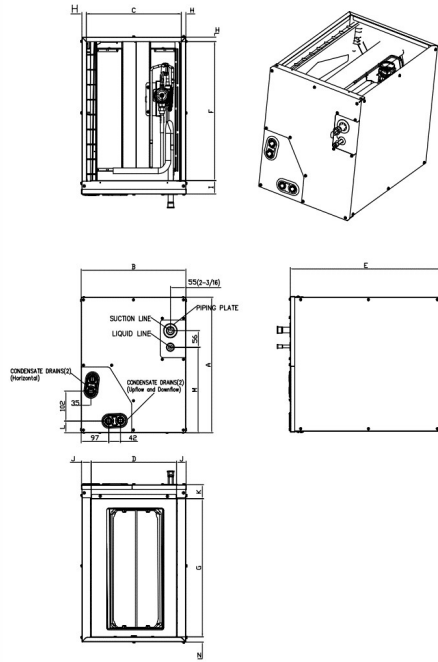
INDOOR UNIT DATA			
IRV	inch^3		106.90
Air flow	SCFM		880
Pressure drop	Pa		70.00
	In. wg.		0.28
Air flow & Noise level			
Indoor air flow (Hi/Med/Lo) (No duct)	(CFM)		//882.35//
Indoor noise level (Hi/Med/Lo)	[dB(A)]		0/0/0
Dehumidification	(L/H)		3.24
Indoor unit			
Dimension (WxDxH)	(inch)		17.52x20.98x23.58
	(mm)		445x533x599
Packing(WxDxH)	(inch)		20.47x26.18x25.39
	(mm)		520x665x645
Net/Gross weight	(lbs.)		60.19/69.00
	(kg)		27.3/31.3

REFRIGERANT PIPE DATA			
Throttle type	Indoor unit		TXV
	Outdoor unit		EEV for heating
Design pressure	(PSIG)		550/340
Refrigerant Type			R410A
Refrigerant charge	oz		134.04
Refrigerant precharge	(ft)		25.0
	(m)		7.5
Additional charge for each ft	(oz/ft)		0.69
Additional charge for each m	(g/m)		65.0
Liquid side/ Gas side(indoor)	(inch)		3/8" / 3/4"
	(mm)		9.52/19
Liquid side/ Gas side(outdoor)	(inch)		3/8" / 3/4"
	(mm)		9.52/19
Max. pipe length	(ft)		164.0
	(m)		50.0
Max. difference in level	(ft)		98.4
	(m)		30.0
Connection method			Flared
Indoor(cooling)	(Deg. °F)		60 ~ 90
	(Deg. °C)		16 ~ 32
Indoor(heating)	(Deg. °F)		32 ~ 86
	(Deg. °C)		0 ~ 30
Outdoor(cooling)	(Deg. °F)		5-122
	(Deg. °C)		-15 ~ 50
Outdoor(heating)	(Deg. °F)		-22 ~ 75
	(Deg. °C)		-30 ~ 24

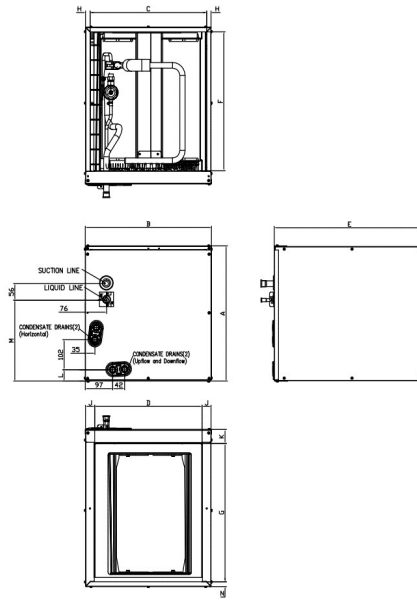
OUTDOOR UNIT DATA			
Compressor			
Type			ROTARY
Model			KTF310D43UMT
Brand			GMCC
Capacity	(Btu/h)		34154
Input	(W)		2765
Rated current (RLA)	(A)		16.5
Refrigerant oil/oil charge	(ml)		VG74/1000
Outdoor fan motor			
Model			ZKFN-120-8-2
Qty			1
Input	(W)		150.0
Output	(W)		120
RLA	(A)		1.4
Speed	(r/min)		950/900/500
Air flow & Noise level			
Outdoor air flow (Max.)	(CFM)		3000
Outdoor noise level	[dB(A)]		62.0
Outdoor unit			
Dimension (WxDxH)	(inch)		37.24x16.14x31.89
	(mm)		946x410x810
Packing (WxDxH)	(inch)		42.91x19.69x34.84
	(mm)		1090x500x885
Net/ Gross weight	(lbs.)		159.83/169.75
	(kg)		72.5/77

Indoor unit dimension

NEW PANEL STYLE



OLD PANEL STYLE



Model(Btu/h)	KV-14F-A NEW PANEL STYLE 18K/20K/22K/24K		KV-14F-B NEW PANEL STYLE 30K(33K)		KV-17F-A NEW PANEL STYLE 30K/36K		KV-17F-B OLD PANEL STYLE 18K/24K		KV-21F-A OLD PANEL STYLE 30K/36K/48K		KV-21F-B NEW PANEL STYLE 48K		KV-24F-A OLD PANEL STYLE 60K	
	inch	mm	inch	mm	inch	mm	inch	mm	inch	mm	inch	mm	inch	mm
A Model Height	18	457	23-1/2	598	23-1/2	599	18	461	24	609	28	711	28	711
B Model Width	14-1/2	368	14-1/2	368	17-1/2	445	17-1/2	445	21	533	21	533	24-1/2	622
C Supply Air Opening Width	13-1/4	336	13-1/4	336	16-3/16	411	16-3/16	411	19-3/4	502	19-3/4	502	23-1/4	591
D Return Air Opening Width	12	303	12	303	15-1/8	384	15-1/8	384	19-1/2	496	19-1/2	496	23	585
E Model Depth	21	534	21	534	21	533	21	533	21	533	21	533	21	533
F Supply Air Opening Depth	18-5/8	473	18-5/8	473	18-5/8	473	18-5/8	473	18-5/8	473	18-5/8	473	18-5/8	473
G Return Air Opening Depth	18-1/2	471	18-1/2	471	18	458	18	458	18-1/2	470	18-1/2	470	18-1/2	470
H Supply Air Opening Side Clearance	5/8	16	5/8	16	5/8	16	5/8	16	5/8	16	5/8	16	5/8	16
I Supply Air Opening Front Clearance	1-3/4	45	1-3/4	45	1-3/4	45	1-3/4	45	1-3/4	45	1-3/4	45	1-3/4	45
J Return Air Opening Side Clearance	5/8	16	5/8	16	1-3/16	30	1-3/16	30	3/4	19	3/4	19	3/4	19
K Return Air Opening Front Clearance	1-13/16	46	1-13/16	46	1-13/16	46	1-13/16	46	1-13/16	46	1-13/16	46	1-13/16	46
L Condensate Drains Height	1-9/16	40	1-9/16	40	1-7/16	37	1-7/16	37	2-1/8	54	2-1/8	54	2-1/8	54
M Liquid Line Height	11-1/2	292	11-1/2	292	16-1/2	418	10-7/8	276	16-5/16	414	21	533	20-1/4	514
N Return Air Opening Side Clearance	3/4	19	3/4	19	3/4	19	1-3/16	30	3/4	19	3/4	19	3/4	19

Outdoor unit dimension

