




**SUBMITTAL DATA SHEET**

<b>A-Coil Heat Pump System</b>	
Location: _____ Engineer: _____ Submitted to: _____ Submitted by: _____ Reference: _____	Approval: _____ Date: _____ Construction: _____ Unit #: _____ Drawing #: _____

<b>Set Code</b>	#REF1
Indoor unit code	22023111000690
Outdoor unit code	22023116000501
<b>Set Model</b>	PAC-36B-HWND1
Indoor unit model	P30-36HFN1-D
Outdoor unit model	
<b>Certified</b>	  



SYSTEM PERFORMANCE DATA			
<b>Power supply</b>			
Normal Operational Voltage	(V, Ph, Hz)	208/230V, 1Ph,	60Hz
Voltage Range	(V)		187-253
<b>Electrical</b>			
Minimum circuit ampacity(Outdoor)	(A)		30
Max. fuse(Outdoor)	(A)		35
Connection wiring			N/A
<b>Cooling</b>			
Capacity	(Btu/h)		35000
Power Input	(W)		/
Current	(A)		/
SEER2	(Btu/W)		15.2
EER2	(Btu/W)		10.0
<b>Heating</b>			
Capacity	(Btu/h)		36000
Power Input	(W)		/
Current	(A)		/
HSPF2-4	(Btu/W)		8.5
HSPF2-5	(Btu/W)		6.6
COP	W/W		/
Heat at 17F(H32)	(Btu/h)		#REF1
Heat at 5F(H42)	(Btu/h)		30000
COP at 5F(H42)	W/W		1.80

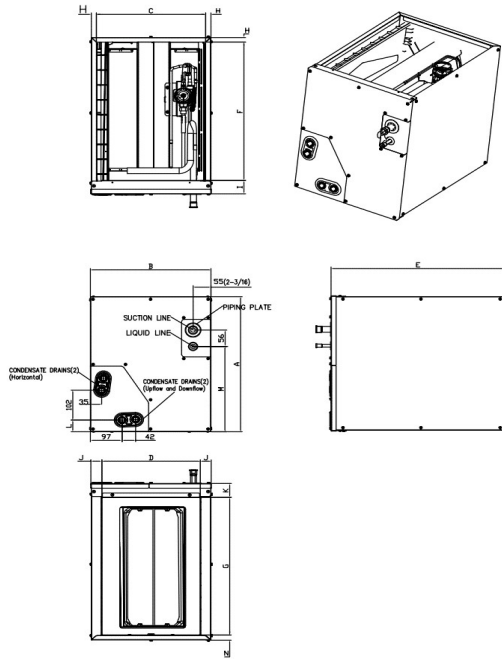
INDOOR UNIT DATA			
<b>IRV</b>	inch*3		#REF1
<b>Air flow</b>	SCFM		880
<b>Pressure drop</b>	Pa		65.10
	In. wg.		0.26
<b>Air flow &amp; Noise level</b>			
Indoor air flow (Hi/Med/Lo) (No duct)	(CFM)		/
Indoor noise level (Hi/Med/Lo)	[dB(A)]		0/0/0
<b>Dehumidification</b>			
	(L/H)		/
<b>Indoor unit</b>			
Dimension (WxDxH)	(inch)		17.52x20.98x23.58
	(mm)		445x533x599
Packing(WxDxH)	(inch)		20.47x26.18x25.39
	(mm)		520x665x645
Net/Gross weight	(lbs.)		60.19/69.00
	(kg)		27.3/31.3

REFRIGERANT PIPE DATA			
Throttle type	Indoor unit		TXV
	Outdoor unit	EEV for heating	
Design pressure	(PSIG)		550/340
Refrigerant Type			R410A
Refrigerant charge	oz		141.10
Refrigerant precharge	(ft)		25.0
Additional charge for each ft	(oz/ft)		0.69
Additional charge for each m	(g/m)		65.0
Liquid side/ Gas side(indoor)	(inch)	3/8" / 3/4"	
	(mm)	9.52/19	
Liquid side/ Gas side(outdoor)	(inch)	3/8" / 3/4"	
	(mm)	9.52/19	
Max. pipe length	(ft)		213.25
	(m)		65
Max. difference in level	(ft)		98.42
	(m)		30
Connection method			Flared
Indoor(cooling)	(Deg. °F)		60 ~ 90
	(Deg. °C)		16 ~ 32
Indoor(heating)	(Deg. °F)		32 ~ 86
	(Deg. °C)		0 ~ 30
Outdoor(cooling)	(Deg. °F)		5-122
	(Deg. °C)		-15 ~ 50
Outdoor(heating)	(Deg. °F)		-22 ~ 75
	(Deg. °C)		-30 ~ 24

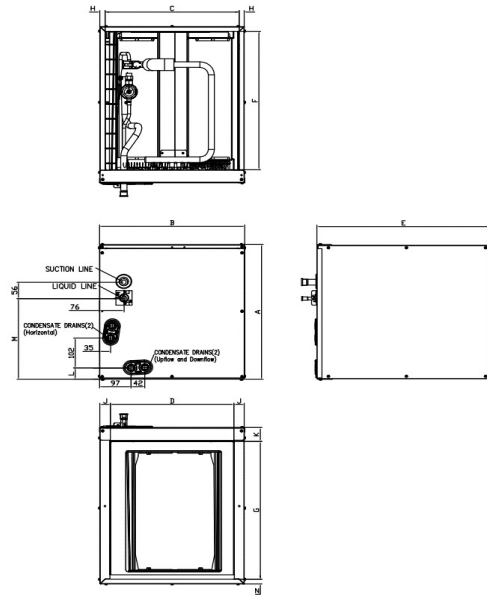
OUTDOOR UNIT DATA			
<b>Compressor</b>			
Type			ROTARY
Model			EAPQ420D1UMUA
Brand			GMCC
Capacity	(Btu/h)		44015
Input	(W)		3565
Rated current (RLA)	(A)		21.5
Refrigerant oil/oil charge	(ml)		1460±15ml/ESTER OIL VG74
<b>Outdoor fan motor</b>			
Model			ZKFN-250-10-1
Qty			1
Input	(W)		/
Output	(W)		/
RLA	(A)		2.5
Speed	(r/min)		850/800/750/650/550
<b>Air flow &amp; Noise level</b>			
Outdoor air flow (Max.)	(CFM)		3035.29
Outdoor noise level	[dB(A)]		65
<b>Outdoor unit</b>			
Dimension (WxDxH)	(inch)		38.58x14.76x38.39
	(mm)		980x375x975
Packing (WxDxH)	(inch)		45.08x19.69x42.52
	(mm)		1145x500x1080
Net/ Gross weight	(lbs.)		203.71/234.57
	(kg)		92.4/106.4

Indoor unit dimension

NEW PANEL STYLE



OLD PANEL STYLE



Dimensions	KV-14F-A		KV-14F-B		KV-17F-A		KV-17F-B		KV-21F-A		KV-21F-B		KV-24F-A		
	NEW PANEL STYLE		NEW PANEL STYLE		NEW PANEL STYLE		OLD PANEL STYLE		OLD PANEL STYLE		NEW PANEL STYLE		OLD PANEL STYLE		
	inch	mm	inch	mm	inch	mm	inch	mm	inch	mm	inch	mm	inch	mm	
A	Model Height	18	457	23-1/2	598	23-1/2	599	18	461	24	609	28	711	28	711
B	Model Width	14-1/2	368	14-1/2	368	17-1/2	445	17-1/2	445	21	533	21	533	24-1/2	622
C	Supply Air Opening Width	13-1/4	336	13-1/4	336	16-3/16	411	16-3/16	411	19-3/4	502	19-3/4	502	23-1/4	591
D	Return Air Opening Width	12	303	12	303	15-1/8	384	15-1/8	384	19-1/2	496	19-1/2	496	23	585
E	Model Depth	21	534	21	534	21	533	21	533	21	533	21	533	21	533
F	Supply Air Opening Depth	18-5/8	473	18-5/8	473	18-5/8	473	18-5/8	473	18-5/8	473	18-5/8	473	18-5/8	473
G	Return Air Opening Depth	18-1/2	471	18-1/2	471	18	458	18	458	18-1/2	470	18-1/2	470	18-1/2	470
H	Supply Air Opening Side Clearance	5/8	16	5/8	16	5/8	16	5/8	16	5/8	16	5/8	16	5/8	16
I	Supply Air Opening Front Clearance	1-3/4	45	1-3/4	45	1-3/4	45	1-3/4	45	1-3/4	45	1-3/4	45	1-3/4	45
J	Return Air Opening Side Clearance	5/8	16	5/8	16	1-3/16	30	1-3/16	30	3/4	19	3/4	19	3/4	19
K	Return Air Opening Front Clearance	1-13/16	46	1-13/16	46	1-13/16	46	1-13/16	46	1-13/16	46	1-13/16	46	1-13/16	46
L	Condensate Drains Height	1-9/16	40	1-9/16	40	1-7/16	37	1-7/16	37	2-1/8	54	2-1/8	54	2-1/8	54
M	Liquid Line Height	11-1/2	292	11-1/2	292	16-1/2	418	10-7/8	276	16-5/16	414	21	533	20-1/4	514
N	Return Air Opening Side Clearance	3/4	19	3/4	19	3/4	19	1-3/16	30	3/4	19	3/4	19	3/4	19

Outdoor unit dimension

